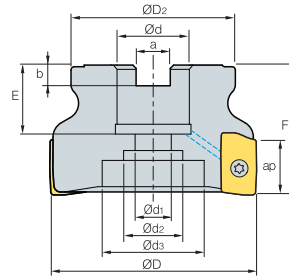
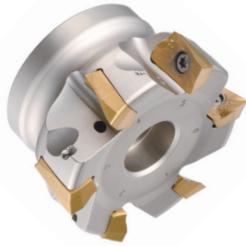


AMXCM new



AA
90°
• AR: 8°
• RR: -10°~3°

Designation			$\varnothing D$	$\varnothing D_2$	$\varnothing d$	$\varnothing d_1$	$\varnothing d_2$	$\varnothing d_3$	a	b	E	F	ap	
AMXCM	040R-16-3-AD17	3	40	35	16	9	14	-	8.4	5.6	19	40	16.5	0.18
	040R-16-4-AD17	4	40	35	16	9	14	-	8.4	5.6	19	40	16.5	0.18
	050R-22-4-AD17	4	50	42	22	11	18	-	10.4	6.3	20	40	16.5	0.23
	050R-22-5-AD17	5	50	42	22	11	18	-	10.4	6.3	20	40	16.5	0.20
	063R-22-5-AD17	5	63	49	22	11	18	-	10.4	6.3	20	40	16.5	0.44
	063R-22-6-AD17	6	63	49	22	11	18	-	10.4	6.3	20	40	16.5	0.49
	080R-27-6-AD17	6	80	57	27	14	25	38	12.4	7.0	23	50	16.5	0.88
	080R-27-7-AD17	7	80	57	27	14	25	38	12.4	7.0	23	50	16.5	0.90

Available inserts

ADKT-ML ADKT-MM



Designation	Cermet		Coated										Uncoated		page			
	CN2000	CN30	NCM325	NC5330	NCM635	NCM545	PC2505	PC2010	PC3600	PC3700	PC6510	PC9530	PC9540	PC5300		PC5400	G10	H01
ADKT	170604PESR-MM																	E04
	170608PESR-MM				●					●	●		●	●	●			
	170608PESR-ML				●					●	●		●	●	●			
	170616PESR-MM													●	●			
	170620PESR-MM													●	●			

Available arbors

Designation	NC arbors
AMXCM 040R-16-3-AD17	BT□□-FMC26-□□
AMXCM 040R-16-4-AD17	BT□□-FMC26-□□
AMXCM 050R-22-4-AD17	BT□□-FMC22-□□
AMXCM 050R-22-5-AD17	BT□□-FMC22-□□
AMXCM 063R-22-5-AD17	BT□□-FMC22-□□
AMXCM 063R-22-6-AD17	BT□□-FMC22-□□
AMXCM 080R-27-6-AD17	BT□□-FMC27-□□
AMXCM 080R-27-7-AD17	BT□□-FMC27-□□

Parts

Specification		
$\varnothing 40\sim\varnothing 80$	FTKA0410	TW15S

Available inserts E04 Available arbors and bolt E400~E402